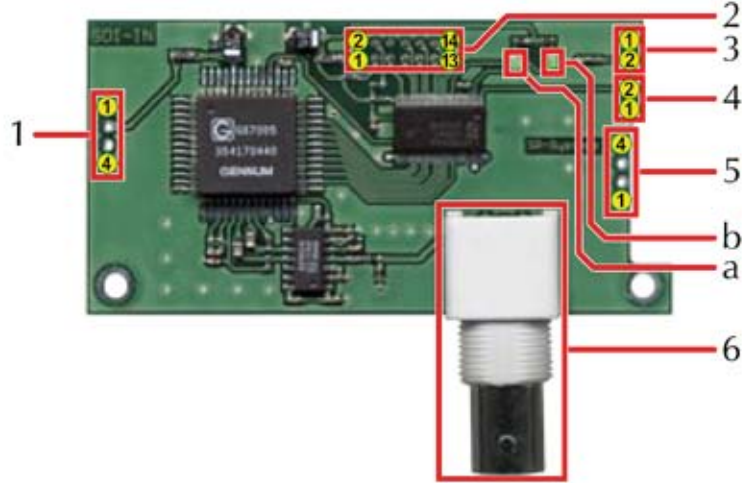


## 1 Connector description



board dimensions: 40x80 mm

Connectors			
1	4pin Header	Power (from Encoder board V3)	
2	14pin Header	656 out	
3	2pin Header	Eye pattern test signal out	
4	2pin Header	656 output driver on/off (on=low)	
5	4pin Header	Power (from Encoder board V4)	
6	BNC Connector 75 Ω	SDI input	

LEDs			
a	LED green	Carrier detected	
e	LED green	SDi signal lock	

## 2 Pin description

1&5 - 5V power in			
1	GND	2	+5.0 V
3	not connected	4	not connected

2 - 656 out			
1	+3.3 V	2	GND
3	not connected	4	not connected
5	VCLK	6	GND
7	DVideo 0	8	DVideo 1
9	DVideo 2	10	DVideo 3
11	DVideo 4	12	DVideo 5
13	DVideo 6	14	DVideo 7

3 - Test signal out	
1	GND
2	Eye pattern

4 - Driver on/off	
1	on/off (on=low)
2	GND