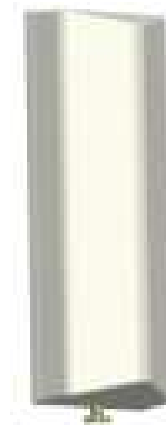


BAN4200

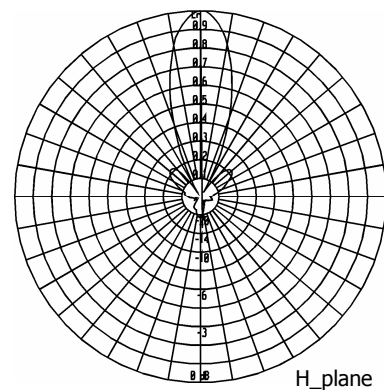
120° - pol.H
Four Dipoles Panel

606÷860 MHz

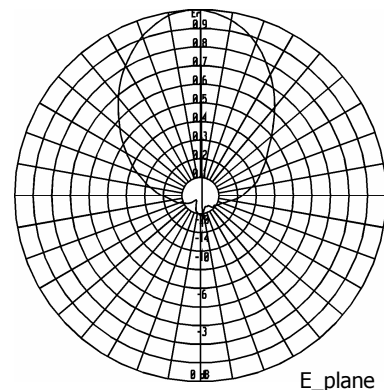
Type	BAN4200
Frequency	606÷860 MHz
Impedance	50 Ω
V.S.W.R.	≤ 1.14
Gain	10 dBd
HPBW	
E-plane	± 37.5°
H-plane	± 12.5°
Front to back	> 20 dB
Polarization	Horizontal
Input connector	7/8" EIA flange
Max power	2 kW
Survival wind velocity	220 km/h
Wind load at 220 km/h	415 N
Dimensions	81.1x30.1x18.4 cm
Packing type	cardboard box
dimensions	40x100x30 cm
Net weight	9.5 kg
Gross weight	10.5 kg



RADIATION PATTERN



H_plane



E_plane

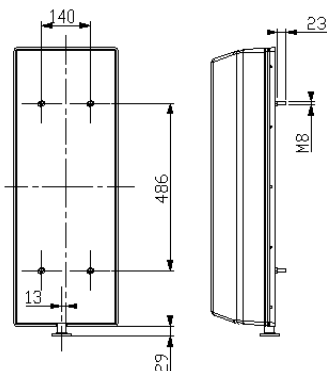
Panels reflector are made of stainless steel as well as nuts and screws.

Input connector is nickel plated while the internal lines are made of silver plated brass.

Alluminium dipoles and passivated brass feeding lines are completely protected by a backed fibreglass radome.

Standard color white (different colors available on request).

All metallic parts are connected to the ground.



MOUNTING SYSTEM

On frame according to the mounting lay-out beside.

Pole mount available on request.

This panel can be used in horizontal polarization to set up systems having directive, semidirective and omnidirectional diagrams.

Systems made up with BAN4200 panels can be designed on customer specifications.