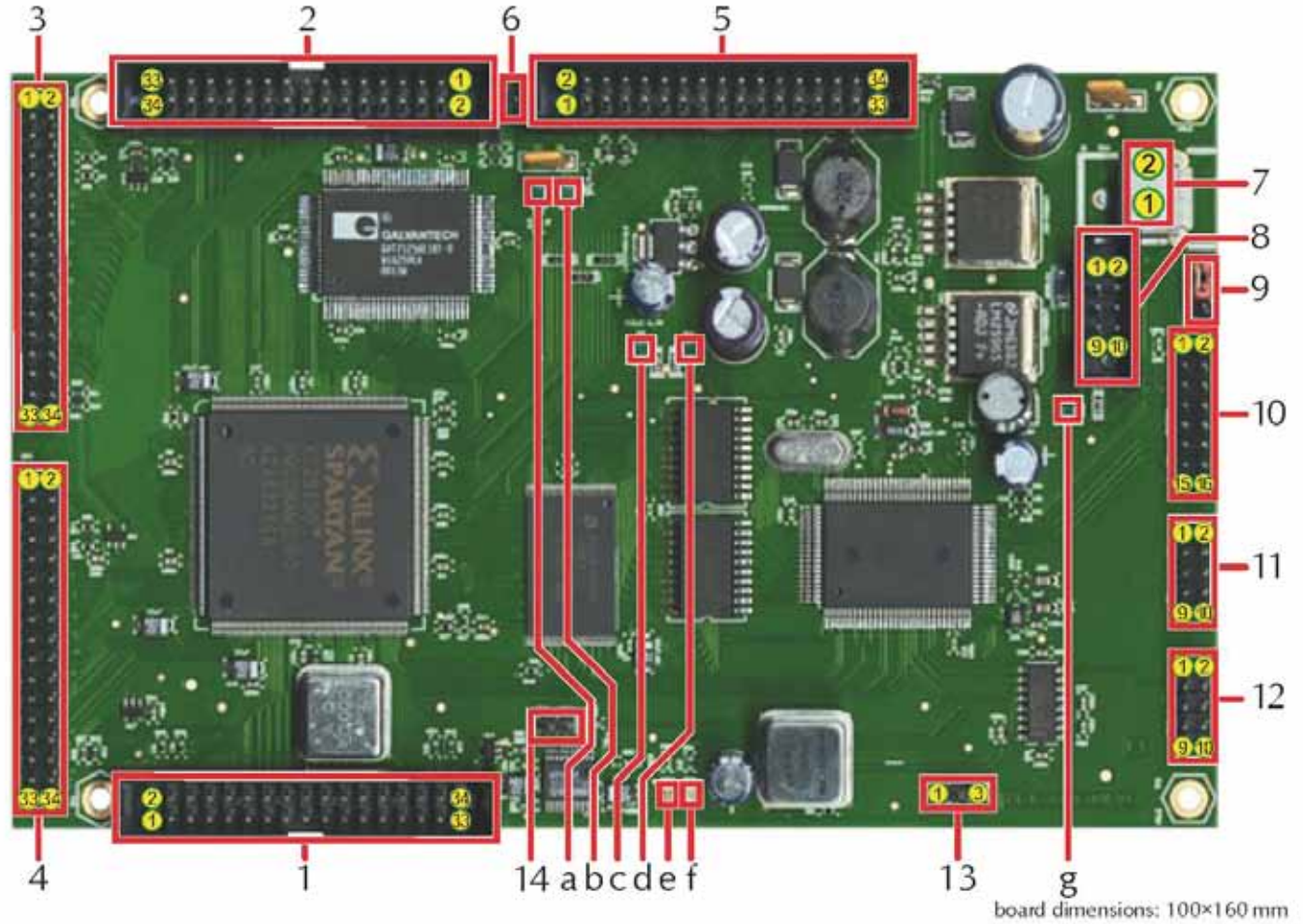



1 Connector description



Connectors	1-4	34pin Header	Transport Stream Input 1-4
	5	34pin Header	Transport Stream Output
	6	2pin Header	5V power on/off-control TS-out
	7	2way screw terminal	Power Input (8-24 V DC)
	8	10pin Header	Display and key unit
	9	3pin Header	MCU Mode Jumper (Run/Program) (shown position is RUN mode)
	10	16pin Header	Optional Connector
	11	10pin Header	Serial Interface COM1 (use for programming)
	12	10pin Header	Serial Interface COM2
	13	3pin Header	Ext. Status LEDs (LEDs e and f), Pin #1 is ground
	14	2pin Header	Ext. 27 MHz clock on from connector 5 (remove 27 MHz osc. if ext. clock is used)



4-CHANNEL MULTIPLEXER

LEDs		
a	LED green	Indicate Externe Power TS Output (from other board)
b	LED green	Off: the internal TS _{Codec} is used On: an external TS _{Codec} from a board at Connector 5 is used
c	LED green	Power ok (3.3 V)
d	LED green	Power ok (2.5 V)
e	LED yellow	lightens up after loading and starting code
f	LED red	On: µC executes Firmware Blinking: Encoder-Firmware is being loaded to all encoder boards Off: Successful start of Encoder-Software On after off: one ore more Encoders couldn't start.
		 Note: Encoders can be connected only to the TS-Input, for which these have been programmed! If a tuner/ext. Clock is connected instead an encoder, the LED will be continuous on after switching on the device.
g	LED green	Power ok (5.0 V)

2 Pin description

1-4 – Transport Stream Input			
1	+5.0 V	2	+5.0 V
3	+5.0 V	4	+5.0 V
5	SDA	6	not connected
7	SCL	8	xReset
9	GND	10	GND
11	TSCLK in/out	12	PSYM
13	not connected	14	DVAL
15	TS 6	16	TS 7
17	TS 4	18	TS 5
19	TS 2	20	TS 3
21	TS 0	22	TS 1
23	GND	24	GND
25	SD Out (f. E.*)	26	PLL THR (f. E.*)
27	SDCLK (f. E.*)	28	SD In (f. E.*)
29	GND	30	GND
31	MCLK 27 MHz	32	ASCLK (f. E.*)
33	RST Vid. Codec	34	not connected

*f.E. = for Encoders

5 – Transport Stream Output			
1	+5.0 V	2	+5.0 V
3	+5.0 V	4	+5.0 V
5	SDA	6	not connected
7	SCL	8	xReset
9	GND	10	GND
11	TSCLK in/out	12	PSYM
13	not connected	14	DVAL
15	TS 6	16	TS 7
17	TS 4	18	TS 5
19	TS 2	20	TS 3
21	TS 0	22	TS 1
23	GND	24	GND
25	SD Out (f. E.*)	26	PLL THR (f. E.*)
27	SDCLK (f. E.*)	28	SD In (f. E.*)
29	GND	30	GND
31	MCLK 27 MHz	32	ASCLK (f. E.*)
33	RST Vid. Codec	34	not connected

*f.E. = for Encoders

10 – Optional			
1	+5.0 V	2	SDA
3	GP0	4	SCL
5	GP1	6	GP2
7	GP3	8	BND1
9	BND2	10	AN7
11	AN6	12	AN5
13	AN4	14	GND
15	ADTG	16	GND

11 – COM1			
1	con. with 4+6	2	TxD
3	RxD	4	con. with 1+6
5	GND	6	con. with 1+4
7	RTS	8	CTS
9	not connected	10	GND

12 – COM2			
1	con. with 4+6	2	TxD
3	RxD	4	con. with 1+6
5	GND	6	con. with 1+4
7	RTS	8	CTS
9	not connected	10	GND

7 – Power input	
1	GND
2	8-24 V DC

8 – Display and key unit			
1	+5.0 V	2	+5.0 V
3	SDA	4	SDA
5	SCL	6	SCL
7	Reset-In	8	IRQ
9	GND	10	GND

Errata/corrections:

- 20.03.2008 coloured TS connectors
- 20.08.2008 changed pins 1+2 of con.7