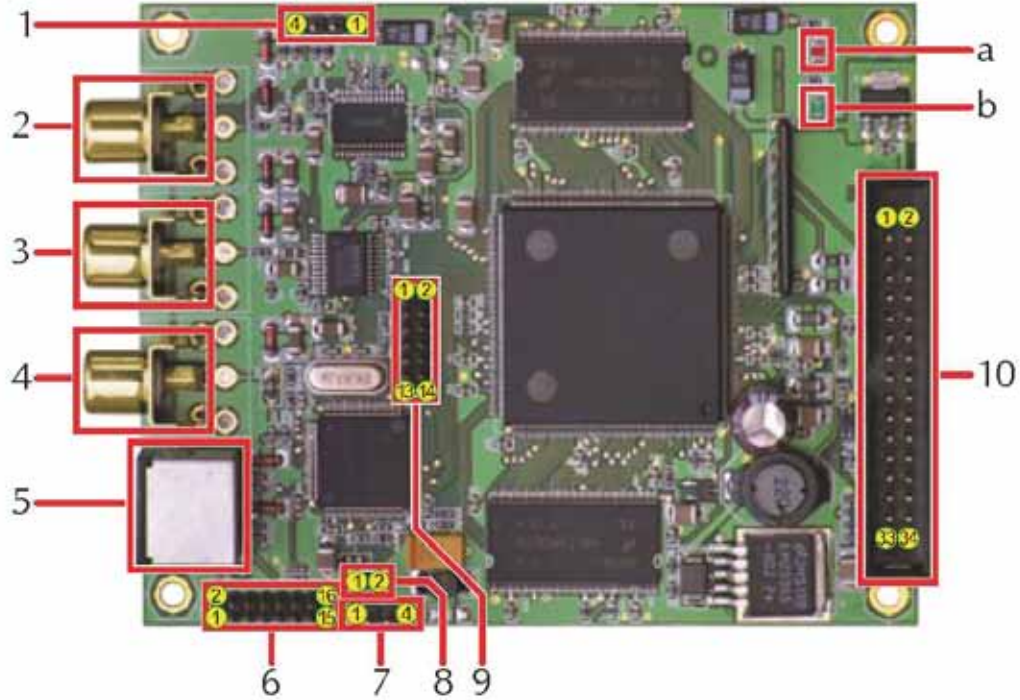


1 Connector description



board dimensions: 80×100 mm

Connectors	1	4pin Header	ext. PC-Bus
	2	RCA plug audio left	0 dB signal level
	3	RCA plug audio right	Signal level adaption only possible after circuit change on the Encoder board!
	4	RCA plug video	Supported standards PAL/NTSC
	5	S-Video	Y/C video input
	6	16pin Header	ext. video and audio input
	7	4pin Header	optional GPIO from video codec
	8	2pin Header	video codec on/off
	9	14pin Header	ITU-656
	10	34pin Header	TS _{out} connection to modulator/multiplexor

LEDs	a	LED red	Voltage 1.8 V ok
	b	LED green	Voltage 3.3 V ok



MPEG-ENCODER

2 Pin description

1 - ext. PC-Bus	
1	GND
2	+5.0 V
3	SDA
4	SCL

6 - ext. Video + Audio			
1	GND	2	S/P-DIF
3	GND	4	Audio L
5	GND	6	Audio R
7	GND	8	CVBS
9	GND	10	Y or G
11	GND	12	C/Cb or B
13	GND	14	Cr or R
15	GND	16	+5.0 V

7 - optional GPIO	
1	GND
2	Pin 35
3	Pin 36
4	Pin 37

8 - video codec on/off	
bridge to disable video codec	

9 - ITU-656			
1	+3.3 V	2	GND
3	not connected	4	not connected
5	VCLK	6	GND
7	DVideo 0	8	DVideo 1
9	DVideo 2	10	DVideo 3
11	DVideo 4	12	DVideo 5
13	DVideo 6	14	DVideo 7

10 - TS out			
1	+5.0 V	2	+5.0 V
3	+5.0 V	4	+5.0 V
5	SDA	6	not connected
7	SCL	8	xReset
9	GND	10	GND
11	TSCLK	12	PSYM
13	not connected	14	DVAL
15	TS 6	16	TS 7
17	TS 4	18	TS 5
19	TS 2	20	TS 3
21	TS 0	22	TS 1
23	GND	24	GND
25	SD Out	26	PLL THR
27	SDCLK	28	SD In
29	GND	30	GND
31	MCLK 27 MHz	32	ASCLK
33	RST Vid. Codec	34	not connected